



Report designed for Performance Model

# Widget Bender

**CONFIDENTIAL**

## ProfileXT<sup>®</sup> Concurrent Performance Model Overview

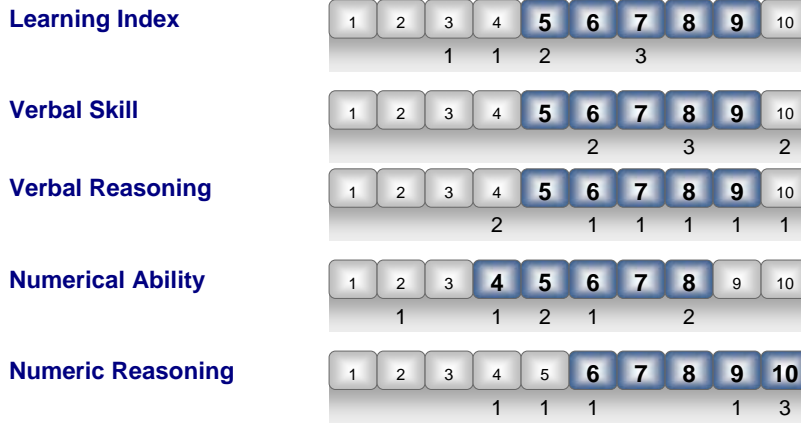
Performance Model Date: 5/24/10  
Printed: 5/24/10

Profiles International  
5205 Lake Shore Dr.  
Waco, TX 76710

Profiles  International  
imagine great people<sup>®</sup>

## Overview Graph

The shaded boxes represent the Concurrent Study PM Performance Model.



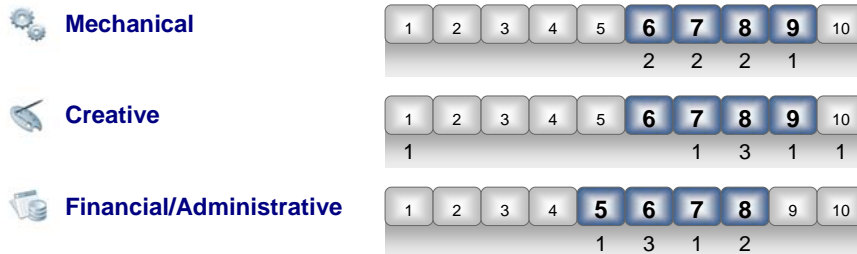
Thinking Style



Behavioral Traits

The matching process for Interests is concerned with the top three interests of a Performance Model and how closely a candidate's top three interests match.

The three top interests for this model are listed below and ranked from top to bottom.



**Interests**

The remaining three interests are listed without a benchmark because they are not used as a part of determining the match to the Performance Model.

